

F-HOLLAND Grou





SAF-HOLLAND G⁺



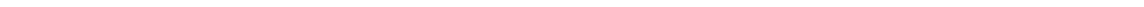
SAF-HOLLAND Group

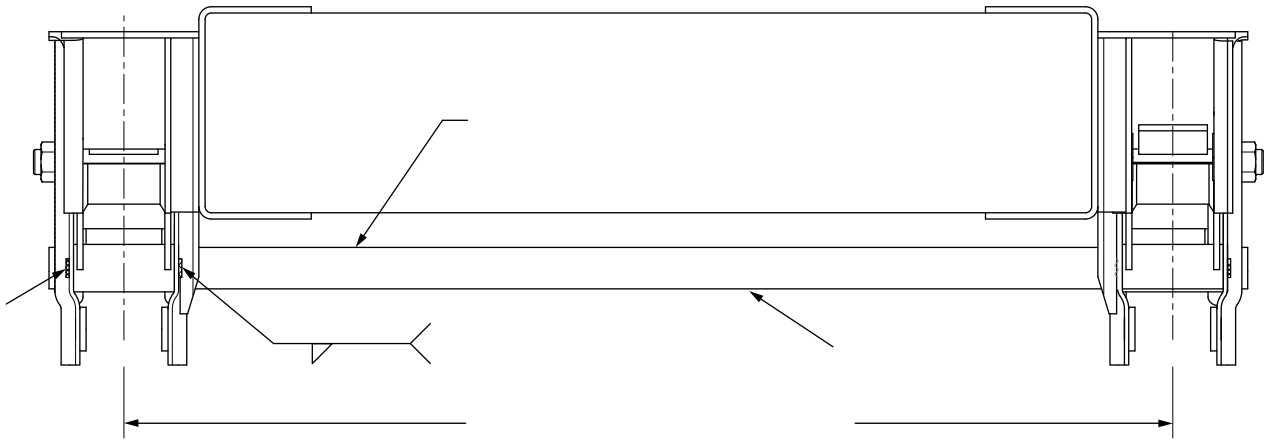


SAF-HOLLAND



SAF-HOLLAND 













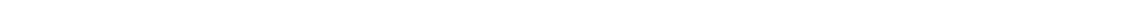
SAF-HOLLAND Group

NOTE: It is recommended that fasteners be installed with the nuts on the outside (closest to tires).

NOTE: Torque specifications are with clean lubricated/threads. All new SAF-HOLLAND fasteners come pre-coated from the factory.

IMPORTANT: On tandem axle suspensions the big end of the spring should be arranged in the equalizer (Figure 21a). On single axle suspensions it should point to the (Figure 21). Arrange the springs so that they are on the correct centers ± 0.03 " (1 and perpendicular to the axle.

IMPORTANT: DO NOT overtighten as this may damage the spacers.





SAF-H
